

NEW BEDFORD

COMPREHENSIVE PLAN

Meeting Summary: 02/11/23 Public Engagement Open House



Agency

Landscape + Planning | Cambridge Econometrics | Hisel Flynn Architects | Innes Associates | Rivera Consulting

OPEN HOUSE OVERVIEW

LOCATION:

Alfred J. Gomes Elementary School
286 S 2nd Street, New Bedford, MA 02740

TIME:

11a.m - 1p.m, Saturday, Feb. 11, 2023

AGENDA:

Share your ideas and visions for the future



Show us areas you love and areas that could be improved



Share which topic areas are most important to you



Hear from the City and the planning team during short presentations



OPEN HOUSE OVERVIEW



100+

Attendees

80+

**Comments
on the
Boards**



65+

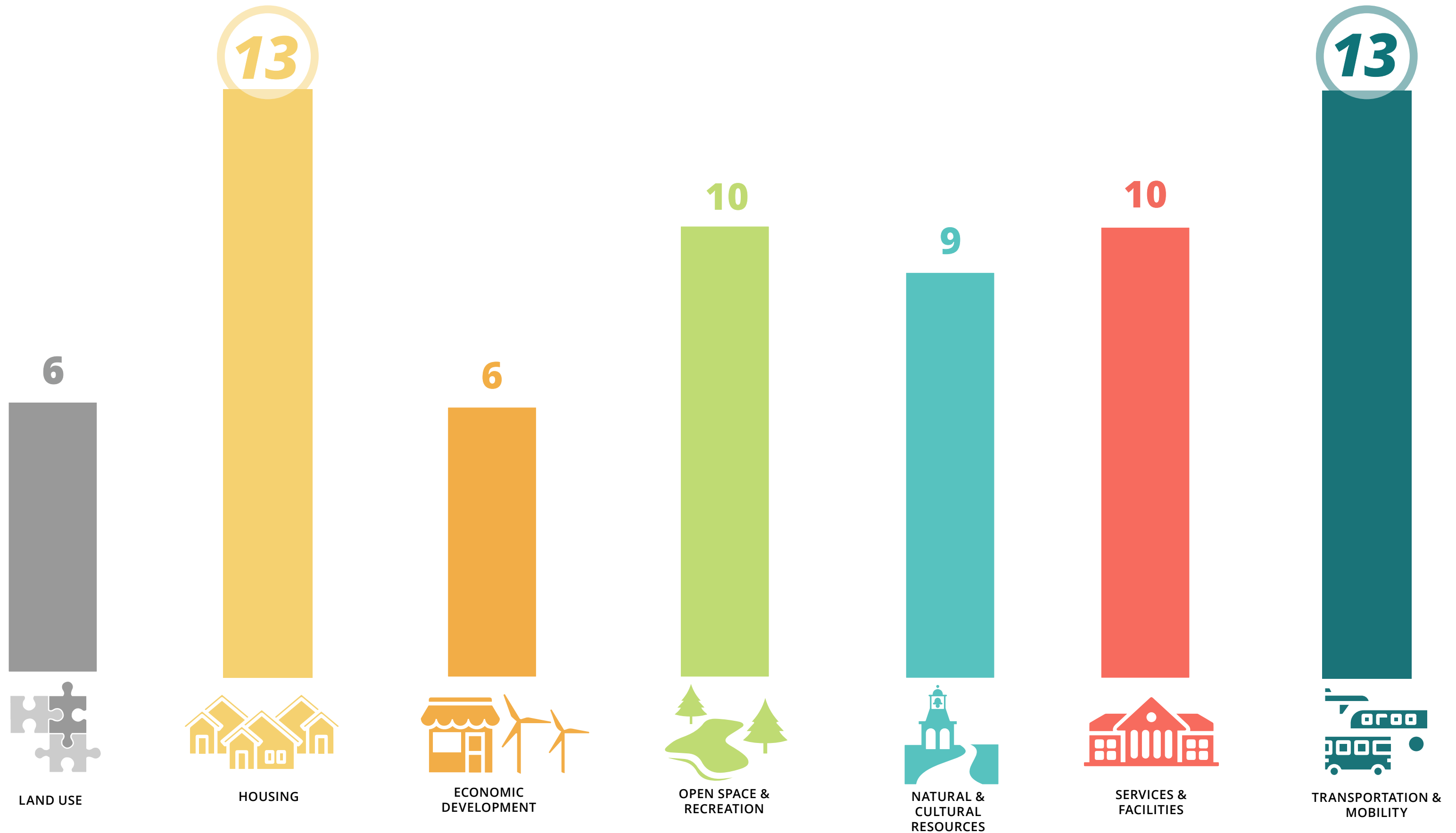
**Topic Area
Priorities Votes**

60+

**Comments on
the Map**



UNDERSTANDING COMMUNITY TOPIC AREA PRIORITIES



KEY THEMES WE HEARD BY TOPIC AREA

GLOBAL PIONEER

Innovation

- Promote more investments in advanced manufacturing and technology

Celebrate Diversity

- Curate more cultural ties

Climate Resiliency

- Utilize existing natural resources to tackle sea level rise
- Think big on climate resilience

REGIONAL HUB

Invest in Community

- Connect jobs to younger generations with a variety of education backgrounds
- Prevent displacement through policy and zoning
- Preserve historic African American, Cape Verdean, St. Helena, Portuguese, Hispanic and Indigenous communities

Arts & Cultural Hub

- Preserve and promote New Bedford's historical sites
- Continue to invest in cultural facilities

Connections

- Plan for the benefits brought by Southcoast Rail
- Reinforce regional economic benefits by connecting with Boston and Providence

THRIVING CITY

Housing

- More affordable housing
- Address systems for housing applications and rental fees, rent hikes and evictions
- Encourage redevelopment of vacant houses and new housing typologies

Celebrate Diversity

- Tell stories in a way that is inclusive and reflects City's tapestry of different ethnicities

Transportation Network

- More investment in all forms of public transit and mobility, including crosswalks, sidewalks, repairs to roads

Healthy Environment

- Create a healthy environment by improving water quality and vegetation
- More investment in parks, trees, and open space

INCLUSIVE NEIGHBORHOOD

Housing

- More housing affordability and accessibility
- Prevent displacement of current residents

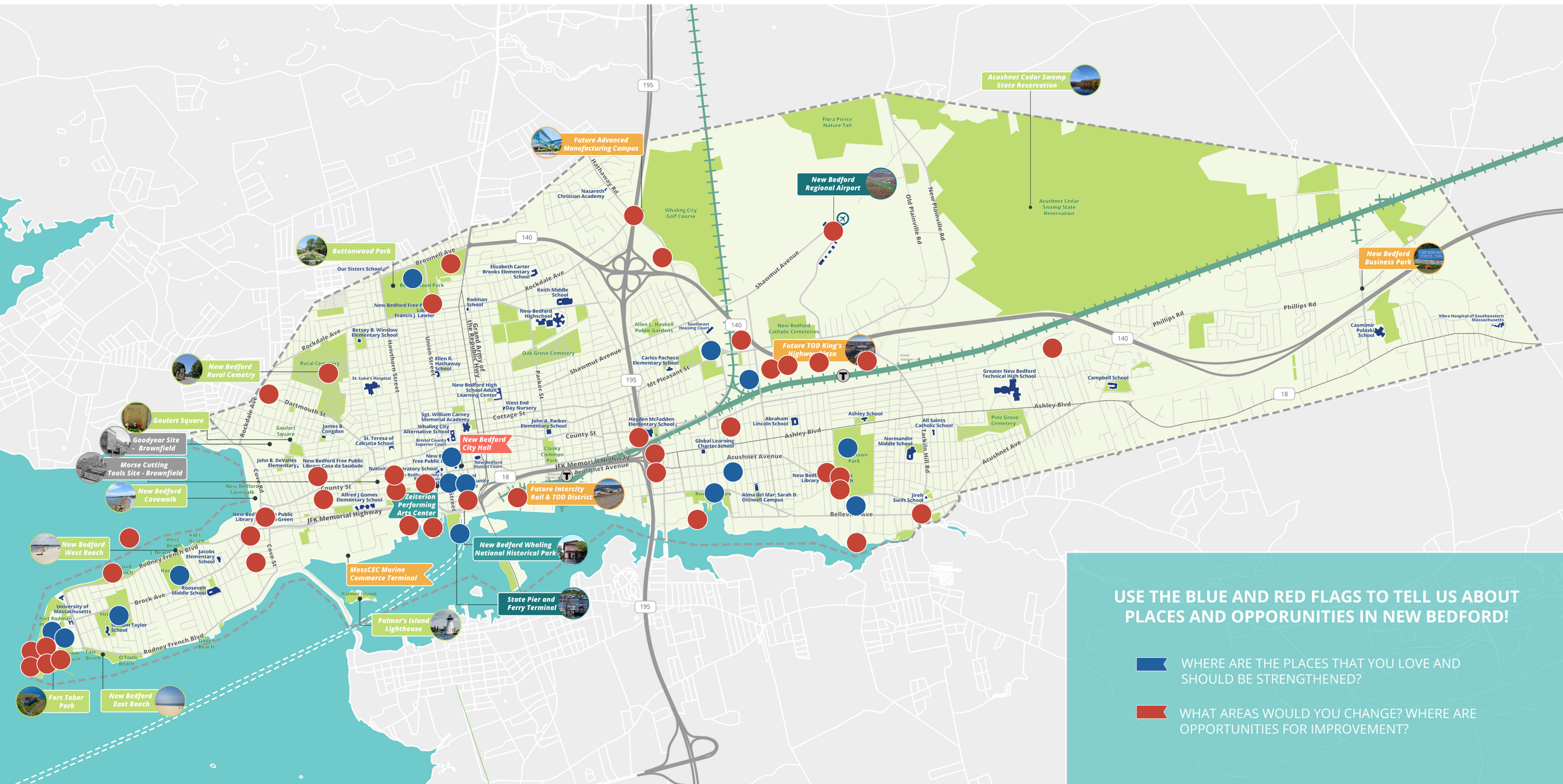
Diversity

- Promote diverse and mixed income neighborhoods

Public Services

- Provide walkable experiences between community hubs
- Access to early education
- More community facilities and shared community spaces
- Enable parks to support gathering and events
- Transparency around public investments and priorities

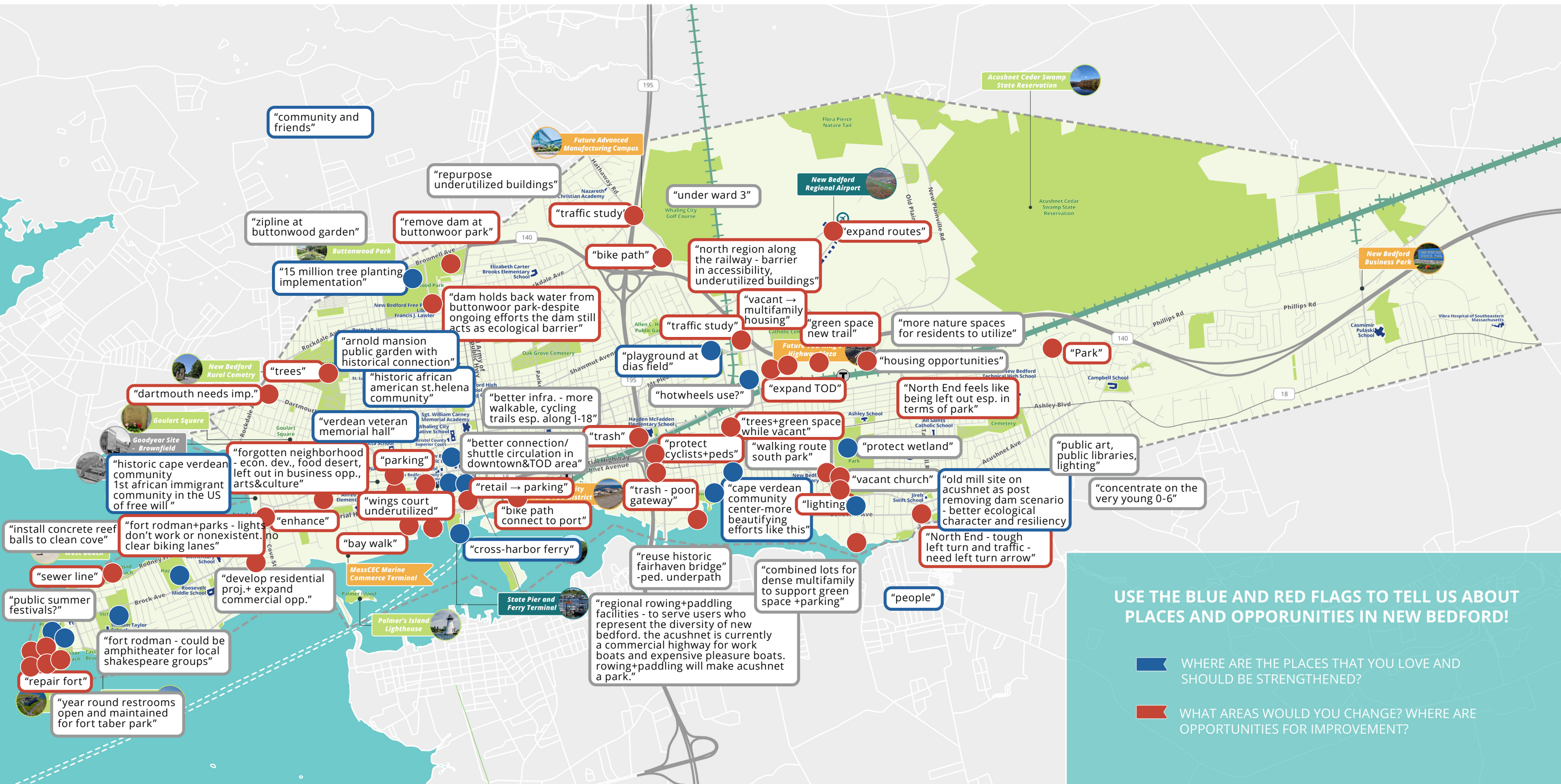
MAPPING ACTIVITY - UNDERSTANDING PLACES



USE THE BLUE AND RED FLAGS TO TELL US ABOUT PLACES AND OPPORTUNITIES IN NEW BEDFORD!

-  WHERE ARE THE PLACES THAT YOU LOVE AND SHOULD BE STRENGTHENED?
-  WHAT AREAS WOULD YOU CHANGE? WHERE ARE OPPORTUNITIES FOR IMPROVEMENT?

MAPPING ACTIVITY - COMMENTS



USE THE BLUE AND RED FLAGS TO TELL US ABOUT PLACES AND OPPORTUNITIES IN NEW BEDFORD!

WHERE ARE THE PLACES THAT YOU LOVE AND SHOULD BE STRENGTHENED?

WHAT AREAS WOULD YOU CHANGE? WHERE ARE OPPORTUNITIES FOR IMPROVEMENT?

"community and friends"

"repurpose underutilized buildings"

"zipline at buttonwood garden"

"remove dam at buttonwoor park"

"traffic study"

"under ward 3"

"expand routes"

"15 million tree planting implementation"

"dam holds back water from buttonwoor park-despite ongoing efforts the dam still acts as ecological barrier"

"bike path"

"north region along the railway - barrier in accessibility, underutilized buildings"

"vacant → multifamily housing"

"green space new trail"

"more nature spaces for residents to utilize"

"Park"

"trees"

"arnold mansion public garden with historical connection"

"historic african american st.helena community"

"better infra. - more walkable, cycling trails esp. along I-18"

"playground at dias field"

"traffic study"

"hotwheels use?"

"expand TOD"

"North End feels like being left out esp. in terms of park"

"housing opportunities"

"dartmouth needs imp."

"verdian veteran memorial hall"

"better connection/ shuttle circulation in downtown&TOD area"

"trash"

"protect cyclists+peds"

"trees+green space while vacant"

"walking route south park"

"protect wetland"

"public art, public libraries, lighting"

"concentrate on the very young 0-6"

"historic cape verdian community - econ. dev., food desert, left out in business opp., arts&culture"

"forgotten neighborhood - econ. dev., food desert, left out in business opp., arts&culture"

"parking"

"wings court underutilized"

"retail → parking"

"trash - poor gateway"

"cape verdian community center-more beautifying efforts like this"

"vacant church"

"old mill site on acushnet as post removing dam scenario - better ecological character and resiliency"

"lighting"

"North End - tough left turn and traffic - need left turn arrow"

"install concrete reef balls to clean cove"

"fort rodman+parks - lights don't work or nonexistent, no clear biking lanes"

"enhance"

"bay walk"

"develop residential proj.+ expand commercial opp."

"bike path connect to port"

"cross-harbor ferry"

"reuse historic fairhaven bridge -ped. underpath"

"combined lots for dense multifamily to support green space +parking"

"people"

"regional rowing+padding facilities - to serve users who represent the diversity of new bedford. the acushnet is currently a commercial highway for work boats and expensive pleasure boats. rowing+padding will make acushnet a park."

"sewer line"

"develop residential proj.+ expand commercial opp."

"public summer festivals?"

"fort rodman - could be amphitheater for local shakespeare groups"

"repair fort"

"year round restrooms open and maintained for fort taber park"