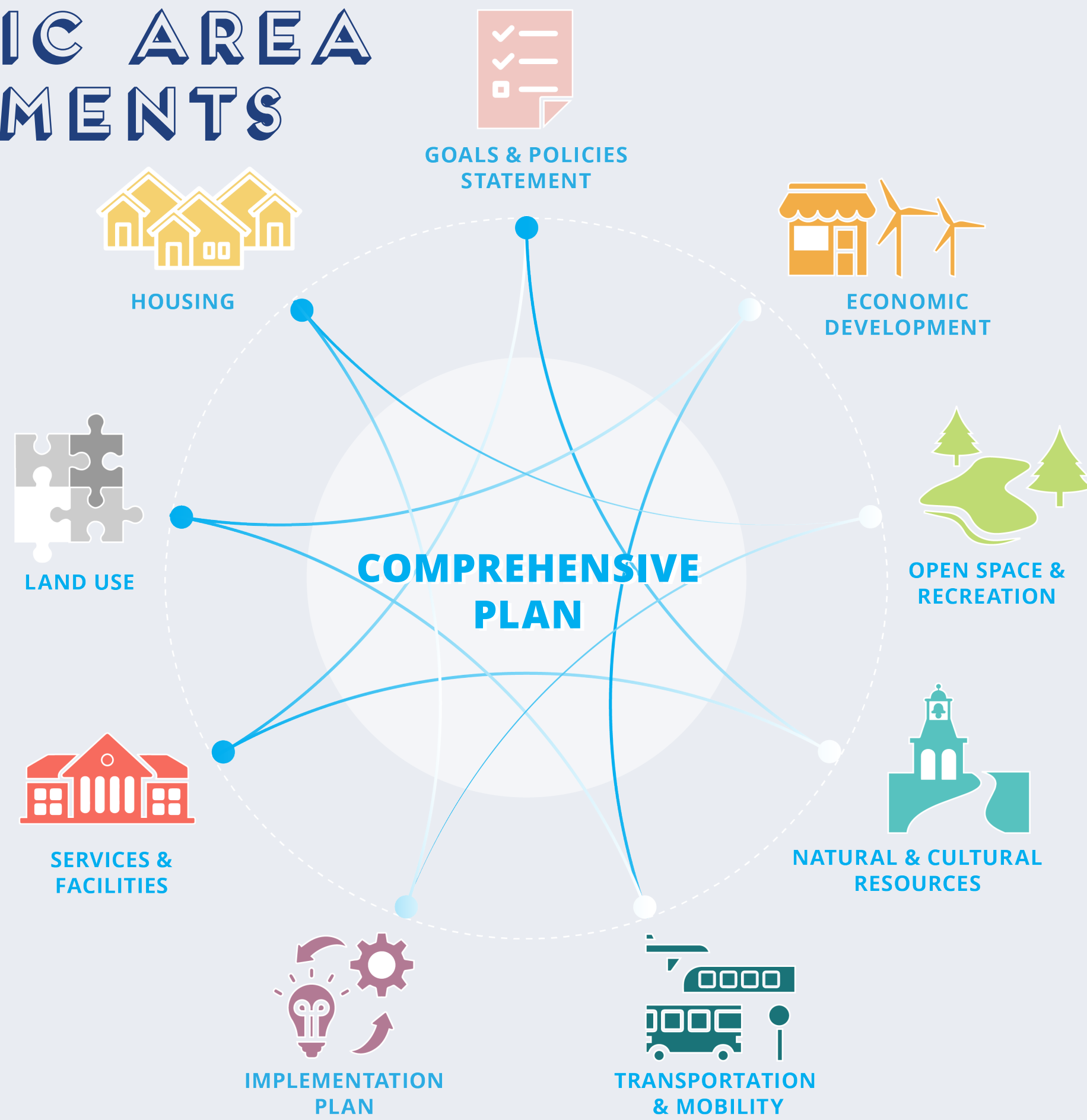


# WHAT IS A COMPREHENSIVE (OR MASTER) PLAN?

## TOPIC AREA ELEMENTS

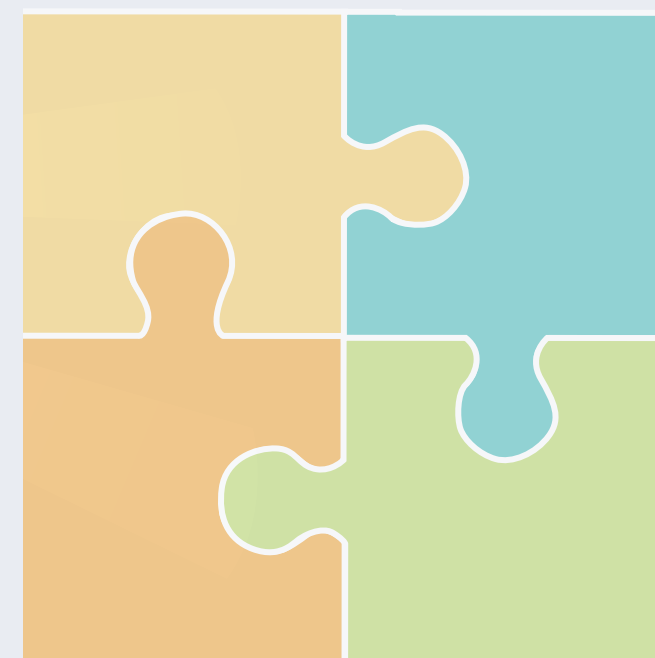


## PLAN COMPONENTS



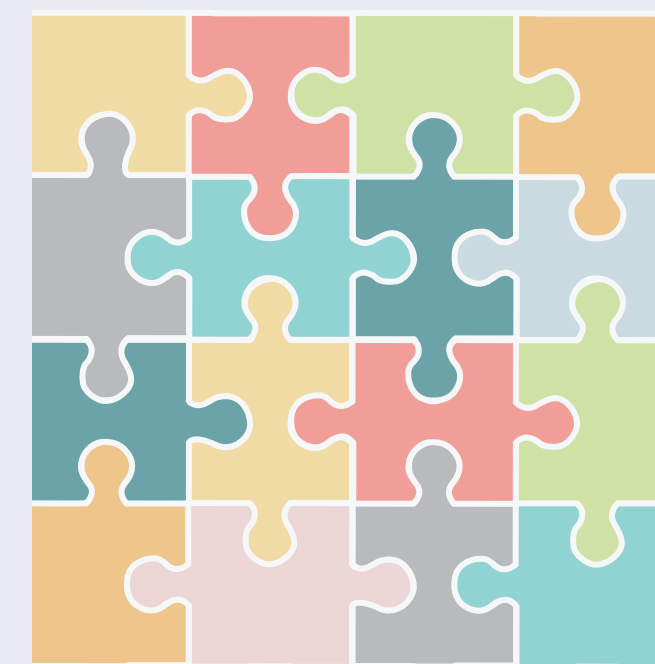
### Vision: Plan Framework

A shared vision for the city and its neighborhoods



### Goals: Your Aspirations

Community supported goals that support the vision and address all plan elements



### Actions: Implementation Path

Concrete programs, policies, and projects for policymaking and investments in the future

The Comprehensive Plan is a long-term guidance document for policy and decision-making in a variety of areas, including Land Use, Housing, Economic Development, Transportation & Mobility, Natural and Cultural Resources, Open Space & Recreation, Public Services & Facilities.

Under Massachusetts General Laws, master planning is governed by Chapter 41, Section 81D. This section requires that the plan address nine elements, including a goals and policies statement and an implementation plan.

Within that framework is a great deal of latitude to craft a master plan that fits the individual needs for the community.

## COMMUNITY ENGAGEMENT

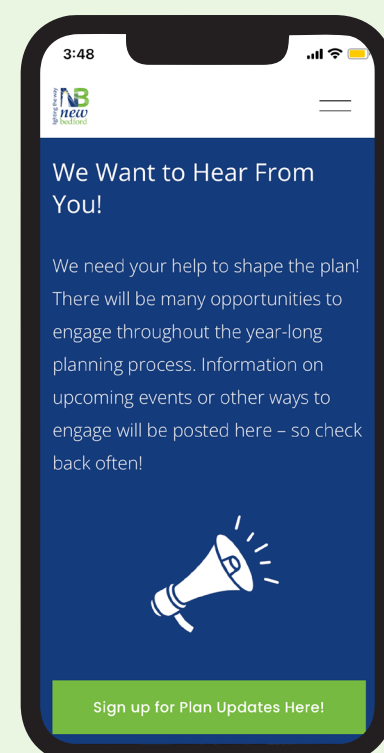
WHAT'S NEXT?

Community participation is important to this process! Input from city residents will directly inform the goals and strategies that guide the next decade of New Bedford's development.

Stay involved on the project website using the QR Code or link on the right!

### PROJECT WEBSITE

More information and ways to engage can be found on the project website!



[www.newbedfordplan.com](http://www.newbedfordplan.com)



HIGHLIGHTS OF WHAT WE'VE BEEN DOING SO FAR

### Pop-up Events

Look for the planning team at upcoming events & meetings!

Another Community Workshop in late Spring!

Engage online anytime at [www.newbedfordplan.com](http://www.newbedfordplan.com)



NEW BEDFORD COMPREHENSIVE PLAN

WELCOME TO TODAY'S EVENT!





# TODAY'S EVENTS:

**Hear from the City and the planning team in presentations at 11:15a.m and 12:15p.m**



**Share your ideas and vision for the future**

**Find us around the mapping table and show us areas you love and areas that could be improved**



**Share which topic areas are most important to you**



**Join us for family activities including games and coloring**



**Get your free raffle tickets!**



**Grab some food and drinks!**



**NEW BEDFORD COMPREHENSIVE PLAN**

WELCOME TO TODAY'S EVENT!





# MAPPING ACTIVITY INTRO

## IDENTIFYING PLACES

We want to hear from you about different places in New Bedford! Use the flags to tag specific locations:

1. Where are the places that you love and should be strengthened?



2. What areas would you change? Where are opportunities for improvement?



### TYPES OF PLACES MIGHT INCLUDE...

**CENTERS**

**COMMERCIAL CORRIDORS**

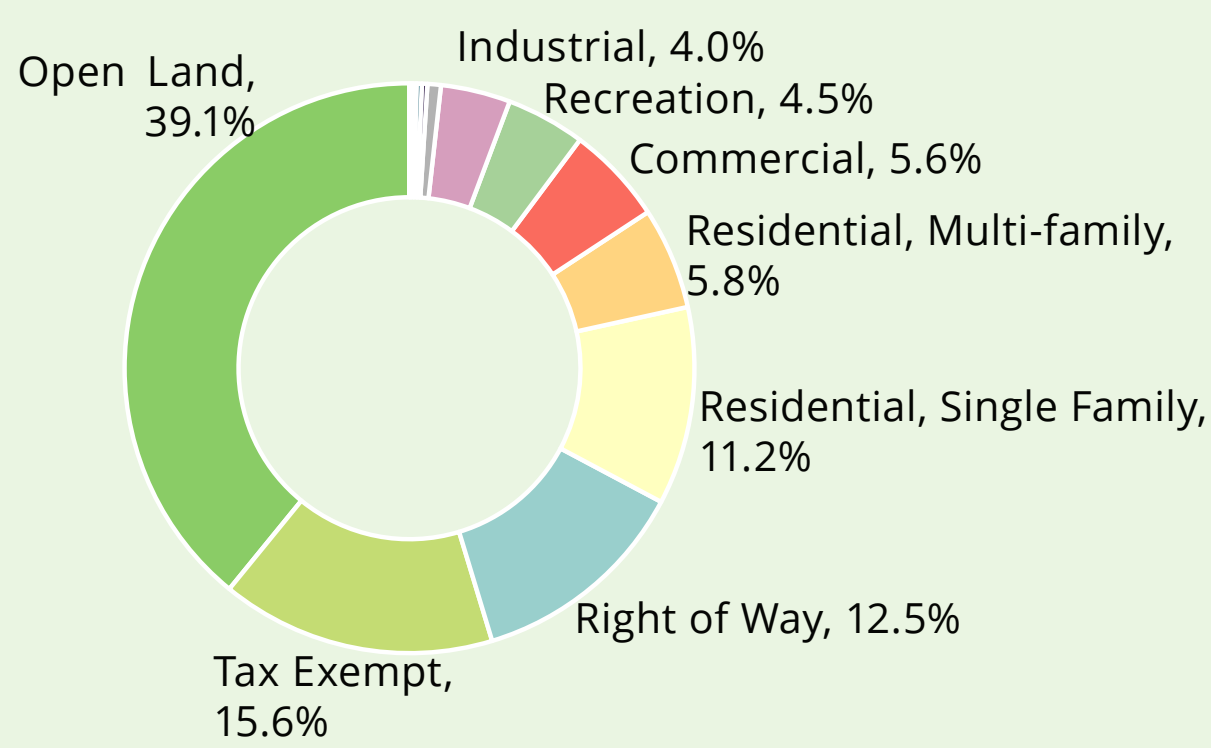
**ECONOMIC PRODUCTION AREAS**

**RESIDENTIAL NEIGHBORHOODS**

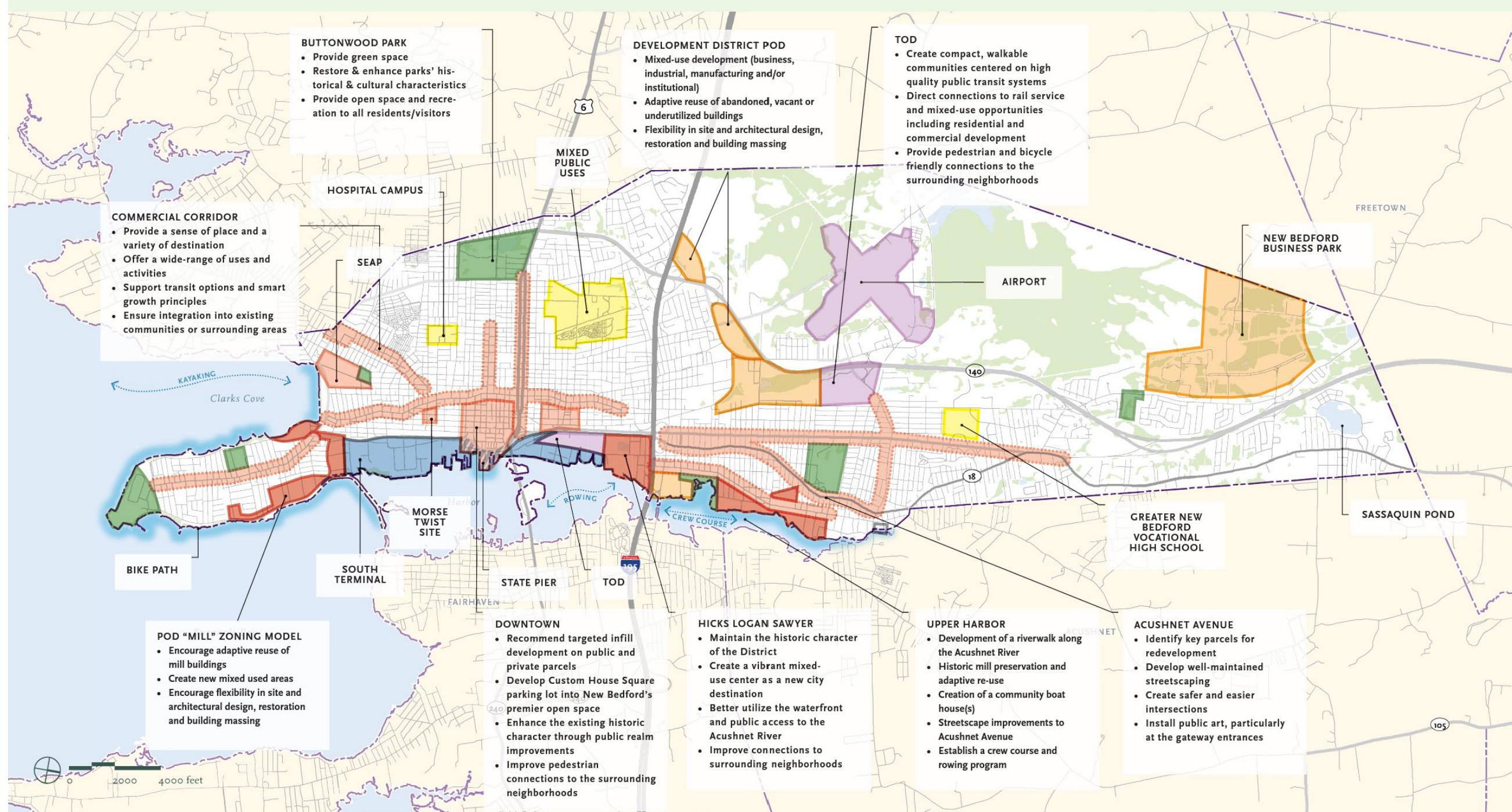
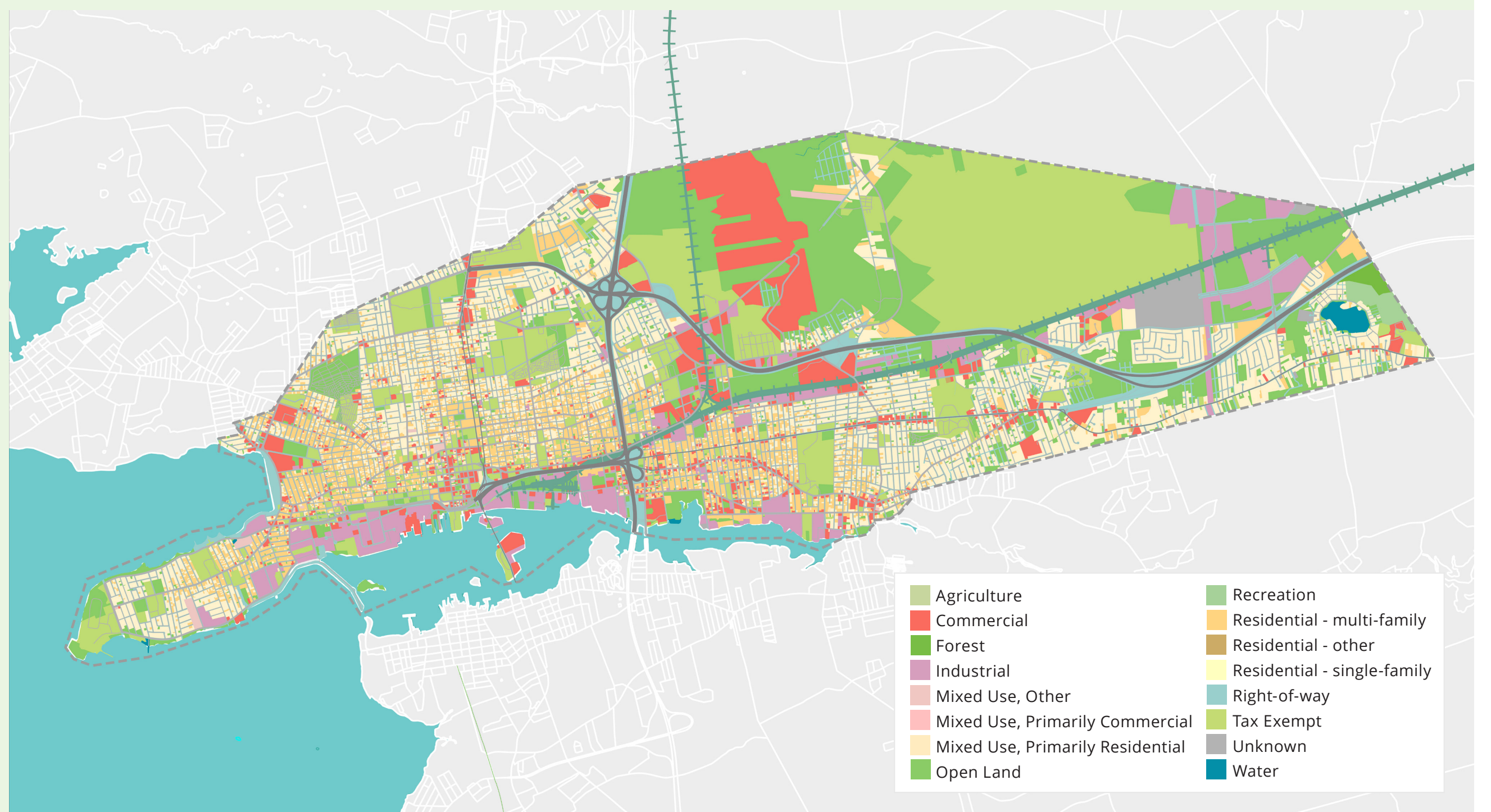
**OPEN SPACE/RECREATION SPACES**

**GATEWAYS/FIRST IMPRESSIONS**

## REFERENCE MAPS



### LAND USE



### NEW BEDFORD 2020 PLACE TYPE

- Redevelopment
- Mixed-use Redevelopment
- Transit Redevelopment
- Traditional Industrial
- Waterfront Redevelopment
- Mill Development District
- Commercial Corridor
- Open Space
- Public Water Access
- Gateway Areas
- Primary & Secondary Corridors

### NEW BEDFORD 2020 MAP (PREVIOUS MASTER PLAN)